

## Acacia Close, Petts Wood BR5

£795,000

3 2 2



- 1930s Semi Detached Home
- Quiet Cul-de-sac De Sac Location
- Large Corner Plot
- Downstairs Shower Room
- Driveway For Three Cars
- Vast Potential To Extend
- Planning Permission Granted
- 0.3 Mile From Petts Wood Station
- Outstanding Schools Nearby
- Green Spaces Within Proximity

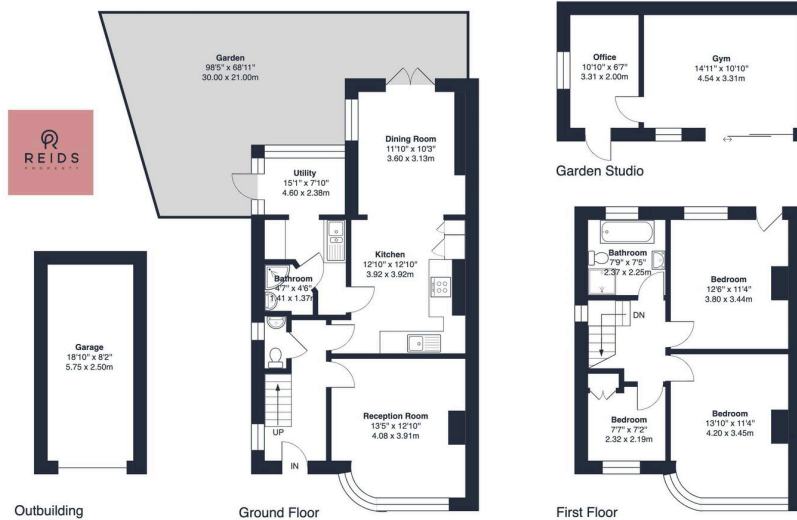
### Acacia Close, BR5

Approximate Gross Internal Area = 1147 sq ft / 106.6 sq m

Garage Area = 155 sq ft / 14.4 sq m

Garden Studio Area = 238 sq ft / 22.1 sq m

Total Area = 1540 sq ft / 143.1 sq m



This plan is for layout guidance only and not drawn to scale unless stated. Window and door openings are approximate. Whilst every care is taken in the preparation of this plan, we would advise interested parties to check all dimensions, shapes and compass bearings prior to making any decisions reliant upon them. Outbuildings not shown in actual location or orientation. Produced for Reids Group Ltd by Prime Square Photography.com / Copyright 2026

Planning Permission Granted.

Three bedroom 1930s semi-detached house occupying a large corner plot in a quiet cul de sac, with potential for a two story extension.