

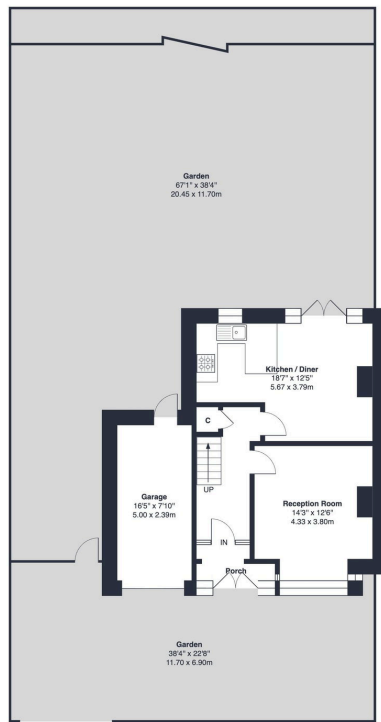
Old Farm Avenue, Sidcup, DA15

Offers Over £550,000

 3  1  2



- Wide Plot With Potential
- 0.6 Mile New Eltham Station
- Garage To Side
- Excellent Schools Nearby
- Three Bedroom 1930s House
- 1 Mile Sidcup Station
- Cosmetic Upgrading Required
- Parkland Nearby



Ground Floor

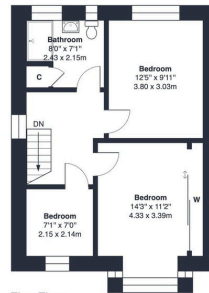


Old Farm Road, DA15

Approximate Gross Internal Area = 977 sq ft / 90.7 sq m

Garage Area = 128 sq ft / 11.9 sq m

Approximate Total Area = 1114 sq ft / 103.5 sq m



First Floor



This floor plan was produced using RICS measurements standards 2nd edition. For layout guidance only and not drawn to scale unless stated. Window and door openings are approximate. Whilst every care is taken in the preparation of this plan, we would advise interested parties to check all dimensions, shapes and compass bearings prior to making any decisions reliant upon them. No liability is accepted for any errors. Produced for Reids Group Ltd by www.primrosephotography.com | Copyright 2020

Situated on a wide plot is this 3 bedroom 1930s semi-detached family home in Sidcup.